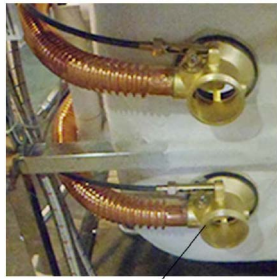


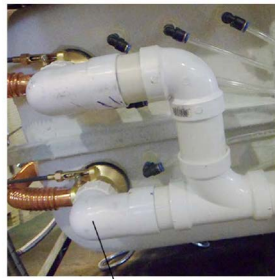
Walk-In Bath Two Drain Options

Walk-In Baths are equipped with one of two drain types shown below. Please refer to your drain option at time of purchase.

2" Brass Drain



Brass



90° PVC Elbow

2" PVC T-type 2 Port Drain



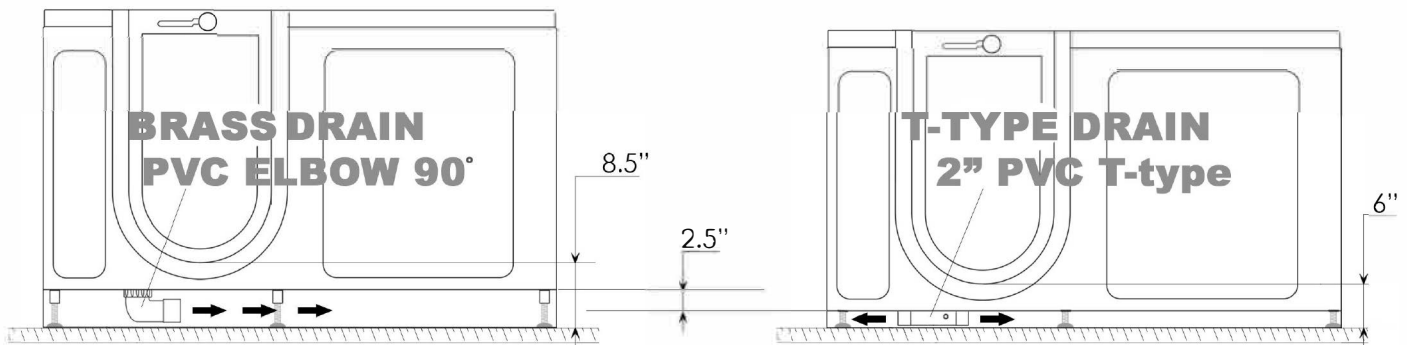
Endcap

PVC T-Type

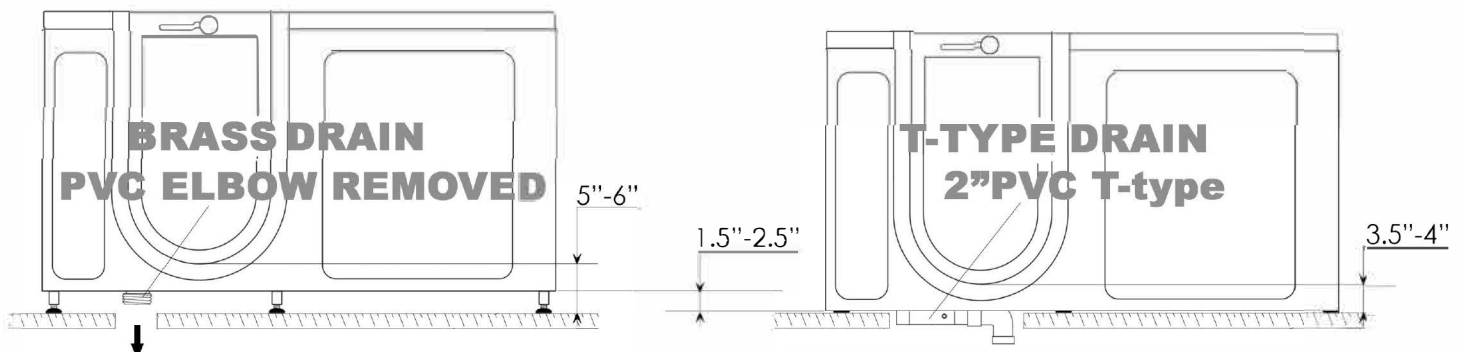


Several installation options

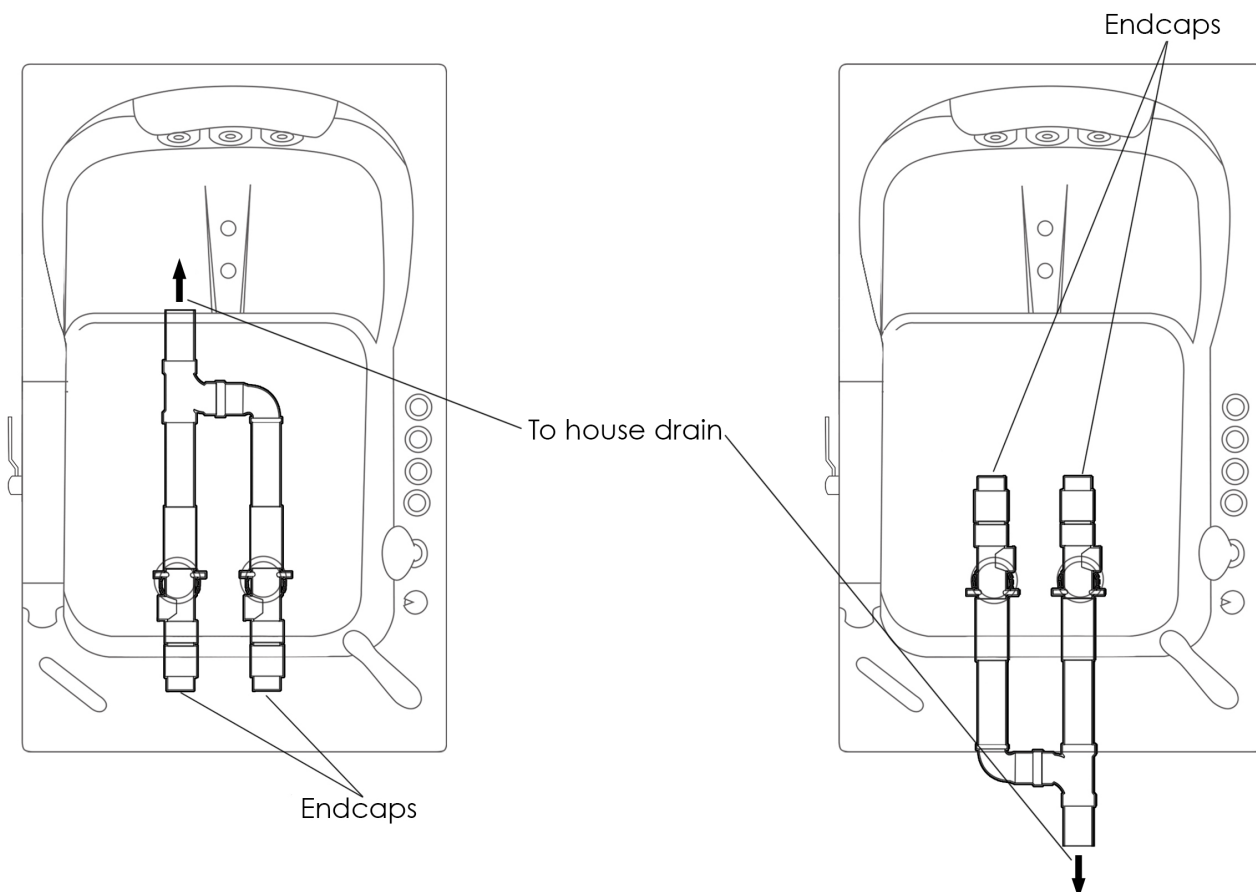
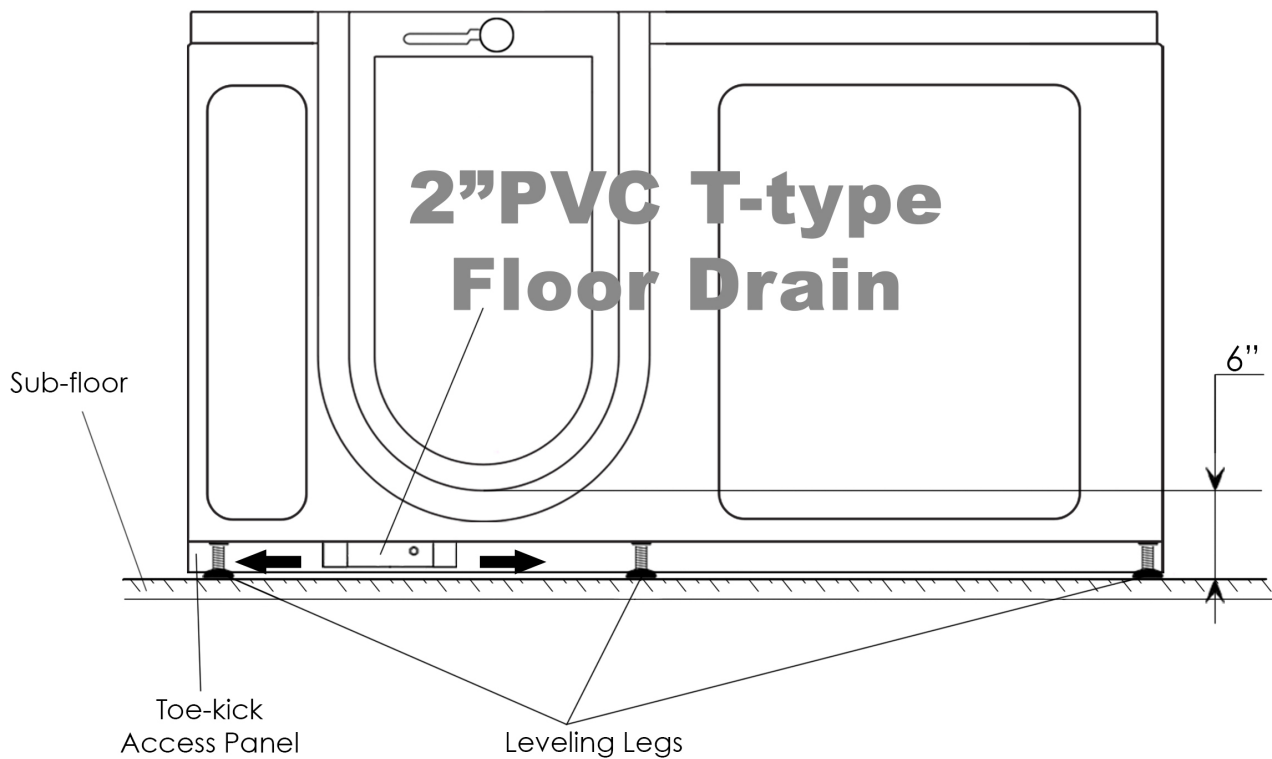
ABOVE THE FLOOR DRAIN INSTALLATION OPTION



BELOW THE FLOOR DRAIN INSTALLATION OPTION WITH LOWERED FRAME/THRESHOLD

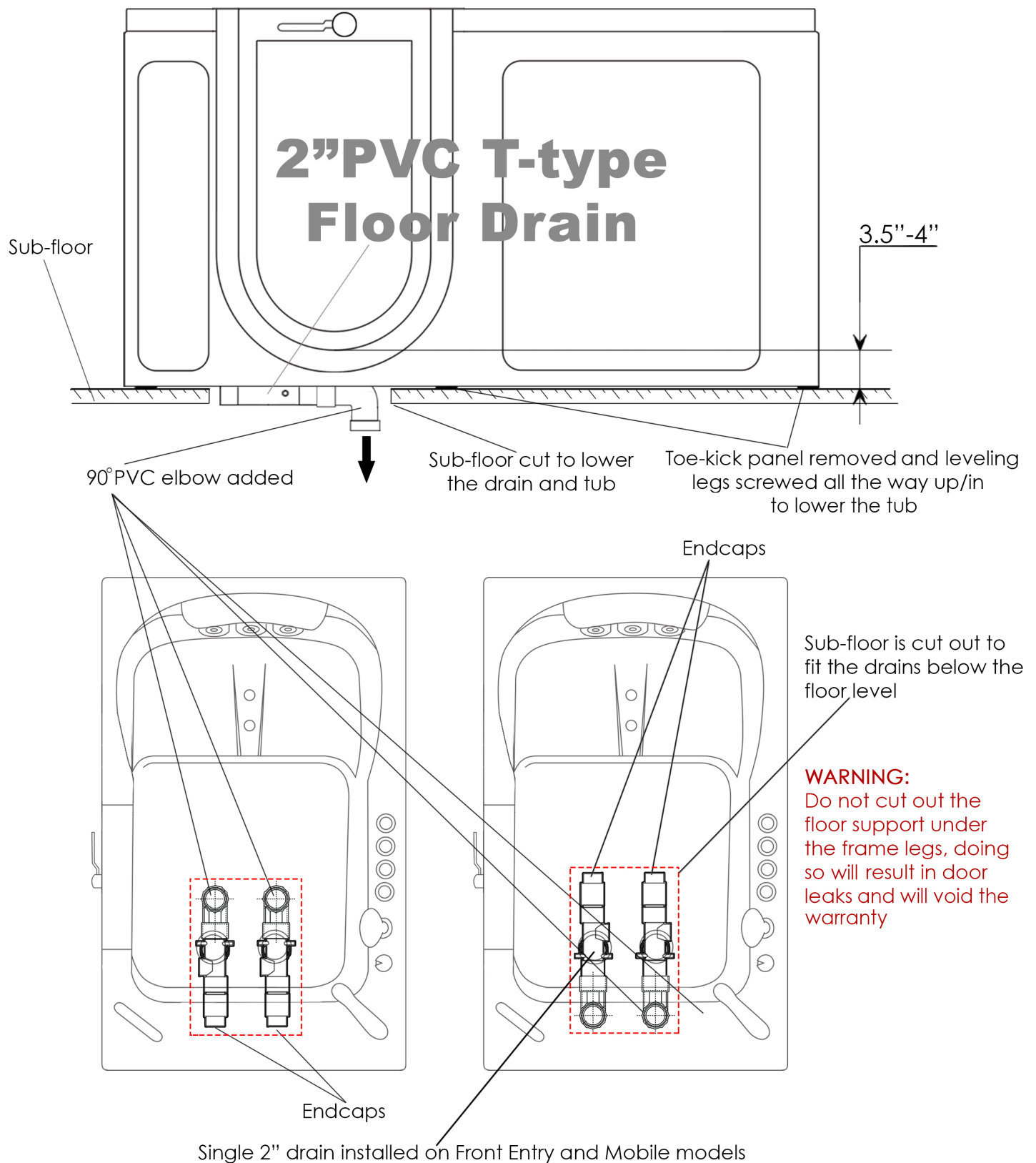


Above the floor drain installation options



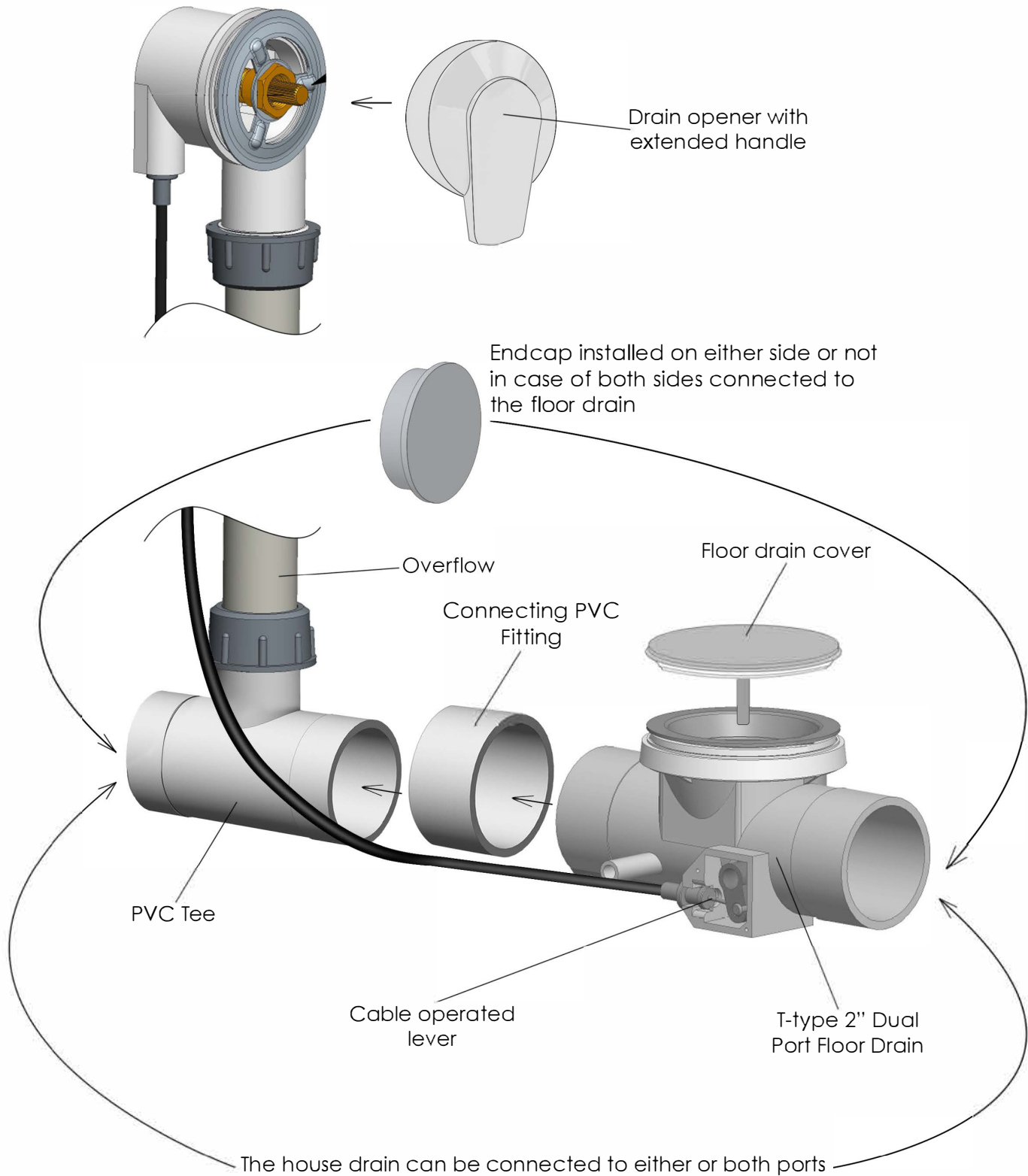
The drain positioning should be determined by a licensed plumber. The pictures above only show a few of the many possible options for drainage setup. For faster drainage all 4 ports may be connected to house drain.

Below the floor drain installation options



The drain positioning should be determined by a licensed plumber. The pictures above only show a few of the many possible options for drainage setup. For faster drainage all 4 ports may be connected to house drain.

2" T-type Dual Port Floor Drain for Dual Drain Walk-In Bathtubs



2" T-type Dual Port Floor Drain for
Single Drain Walk-In Bathtubs
Available on Models: Front Entry and Mobile

